

A fashion advertisement featuring three models in a surreal, geometric environment. The background is a hallway with a floor of black and white diagonal stripes and walls of orange and black diagonal stripes. A large pink diamond shape is superimposed on the right side. The models are wearing outfits with bold geometric patterns: red and white stripes, blue and white stripes, and pink and white stripes. The text 'JUEGO DE RAYAS' is overlaid in the center.

# JUEGO DE RAYAS









ANNAKIKI



ANTEPRIMA



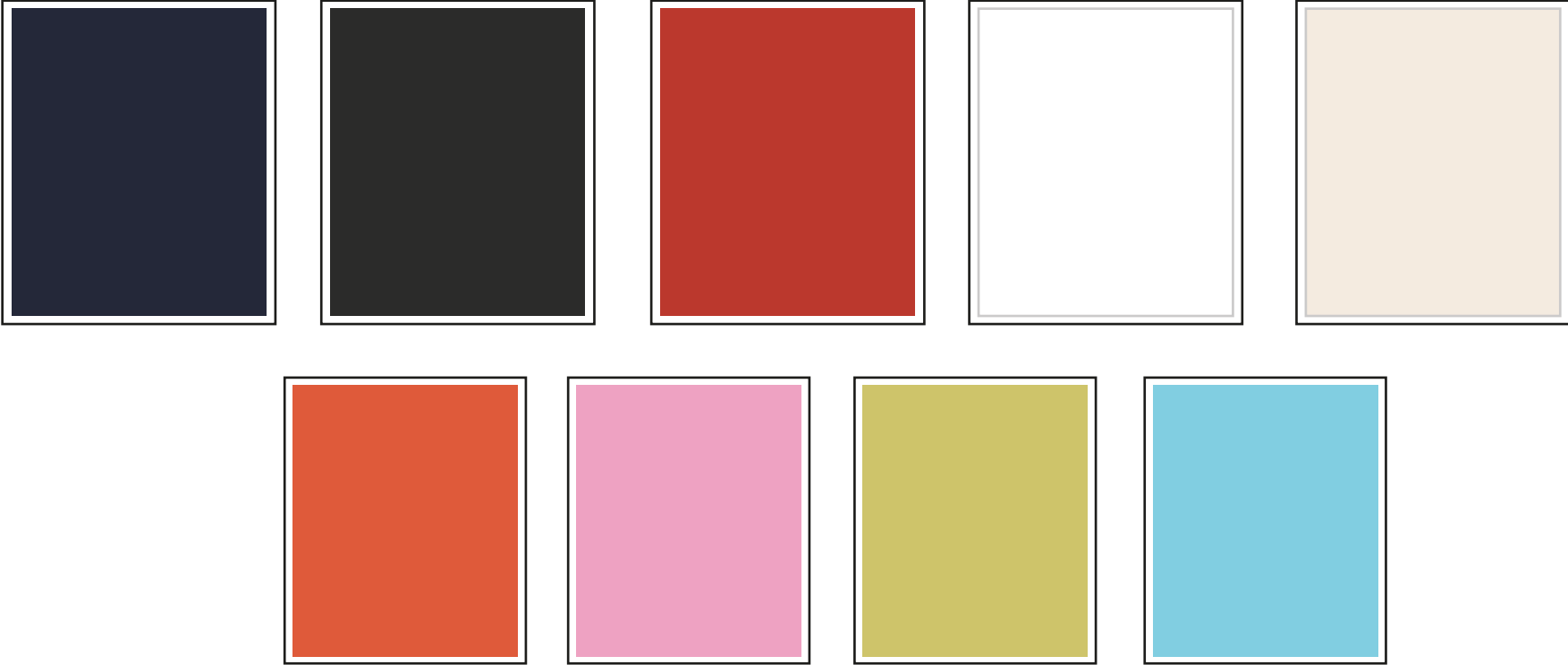
DSQUARED2



LUISA SPAGNOLI



# GAMA DE COLOR





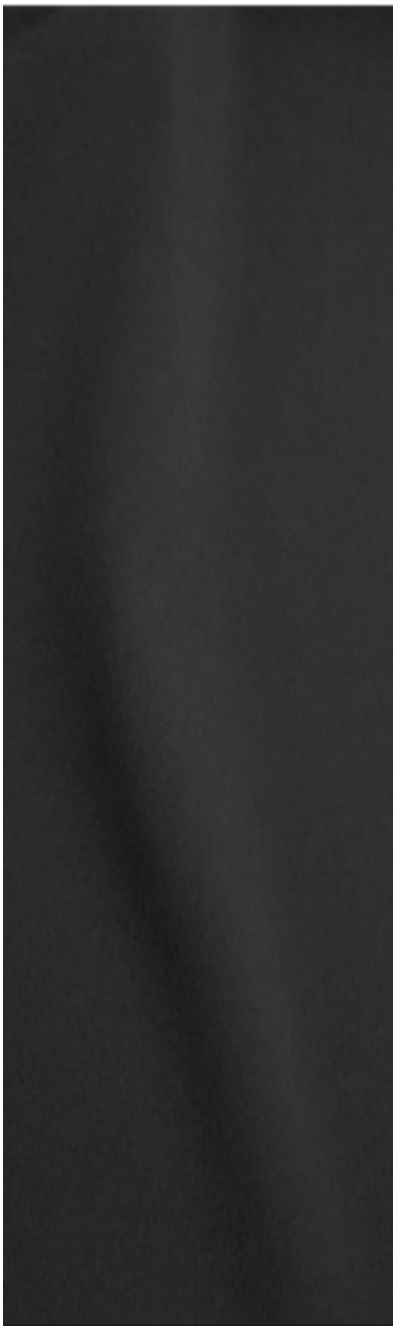
# BASES DE ESTAMPACION



MILÁN



CHALIS SUPREMO



KABU



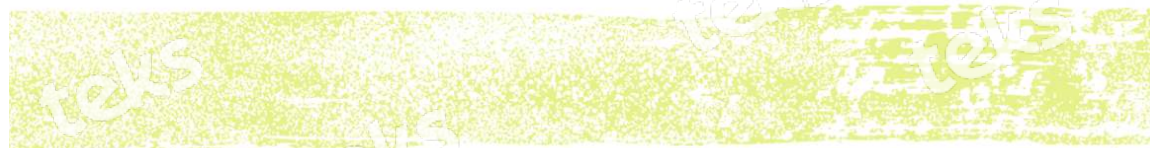
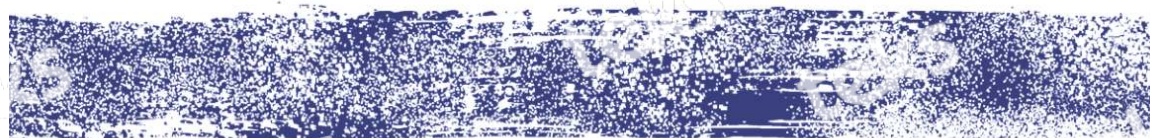
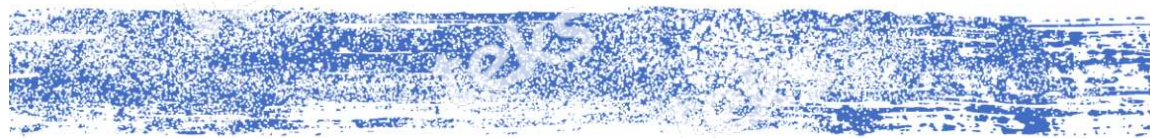
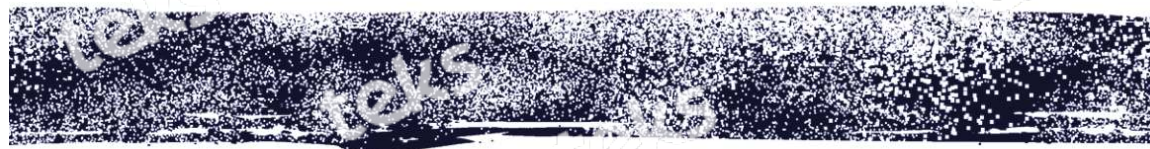
# JUEGO DE RAYAS ACUARELADAS



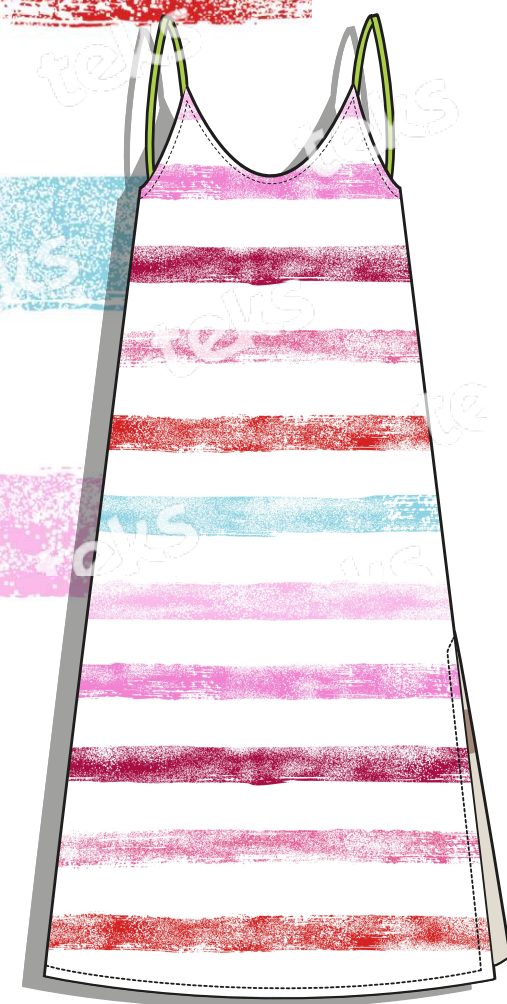
REFERENCIA: LINO LANAR  
BASE: LINO MILAN



# JUEGO DE RAYAS ACUARELADAS

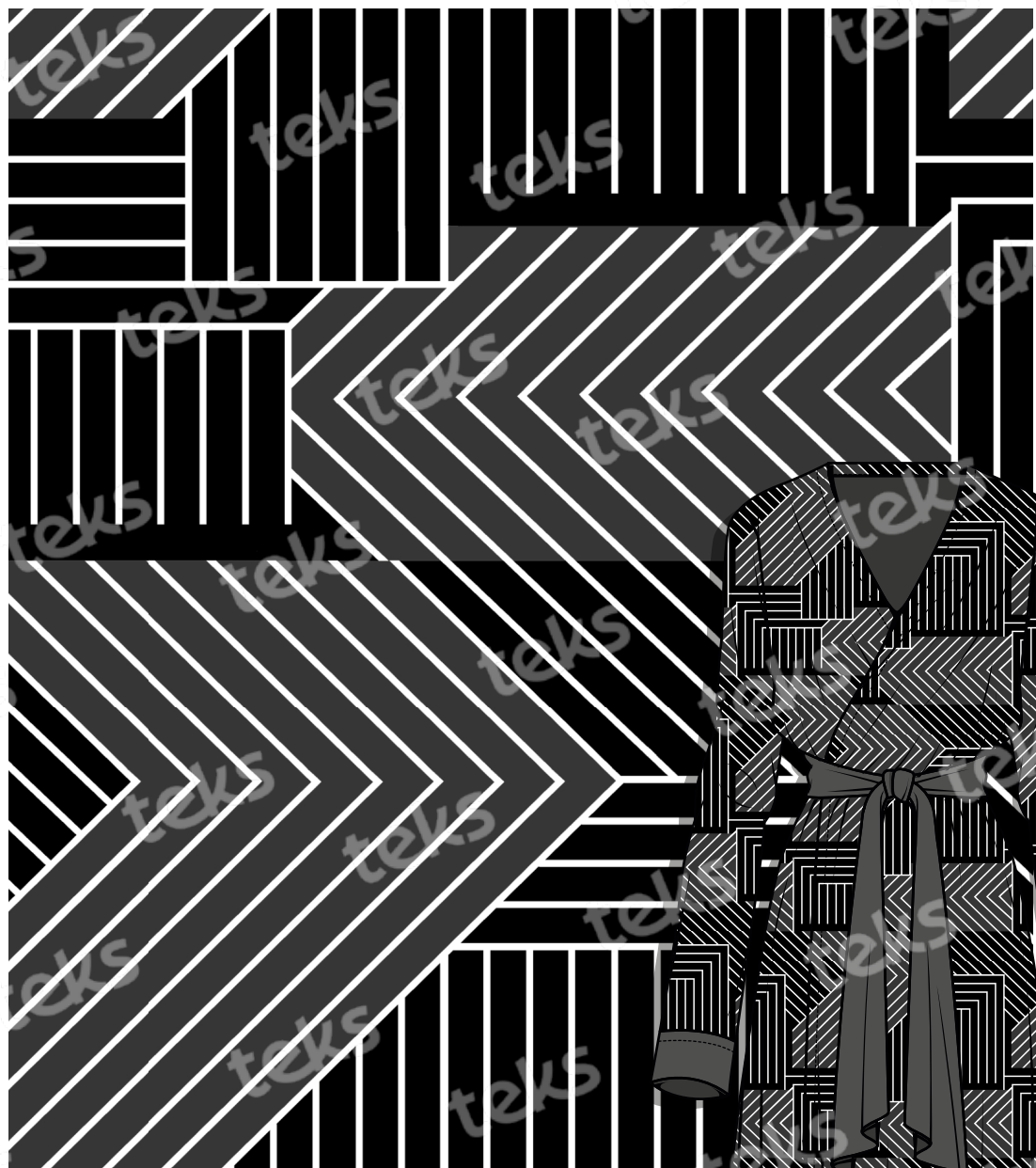
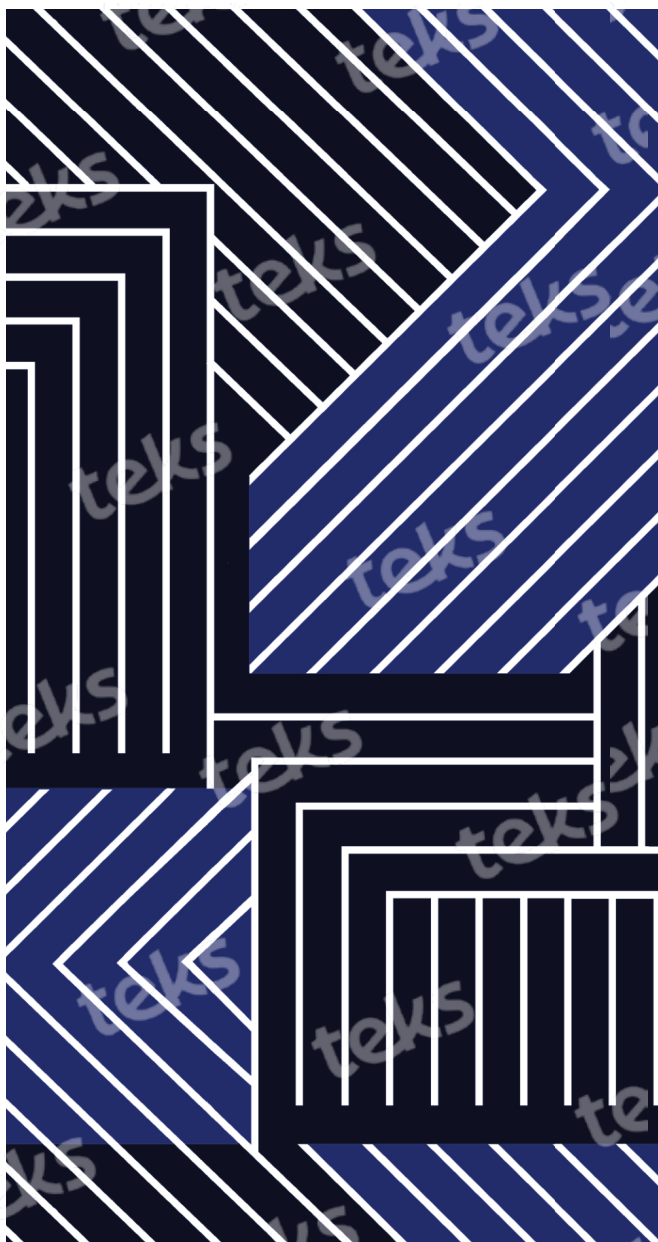


REFERENCIA: LINO FLORENCIA  
BASE: LINO MILAN





# JUEGO DE RAYAS CRUZADAS



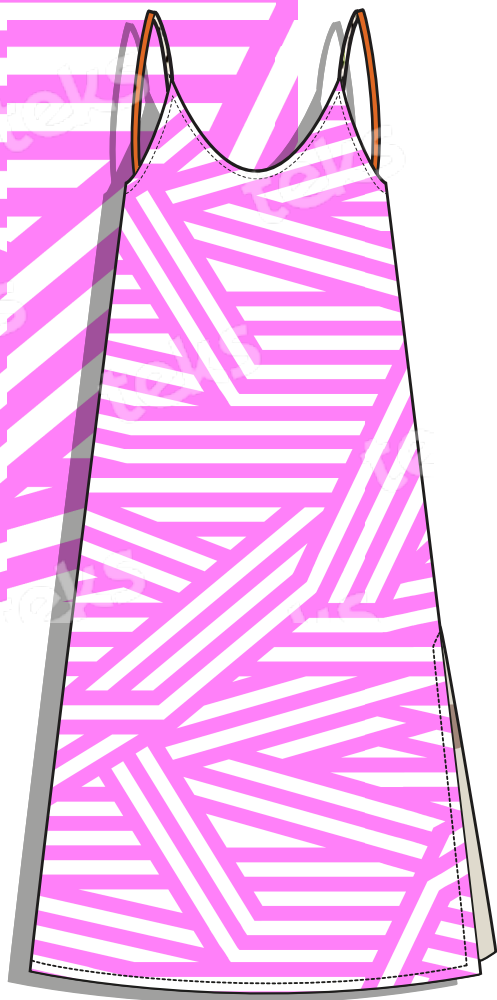
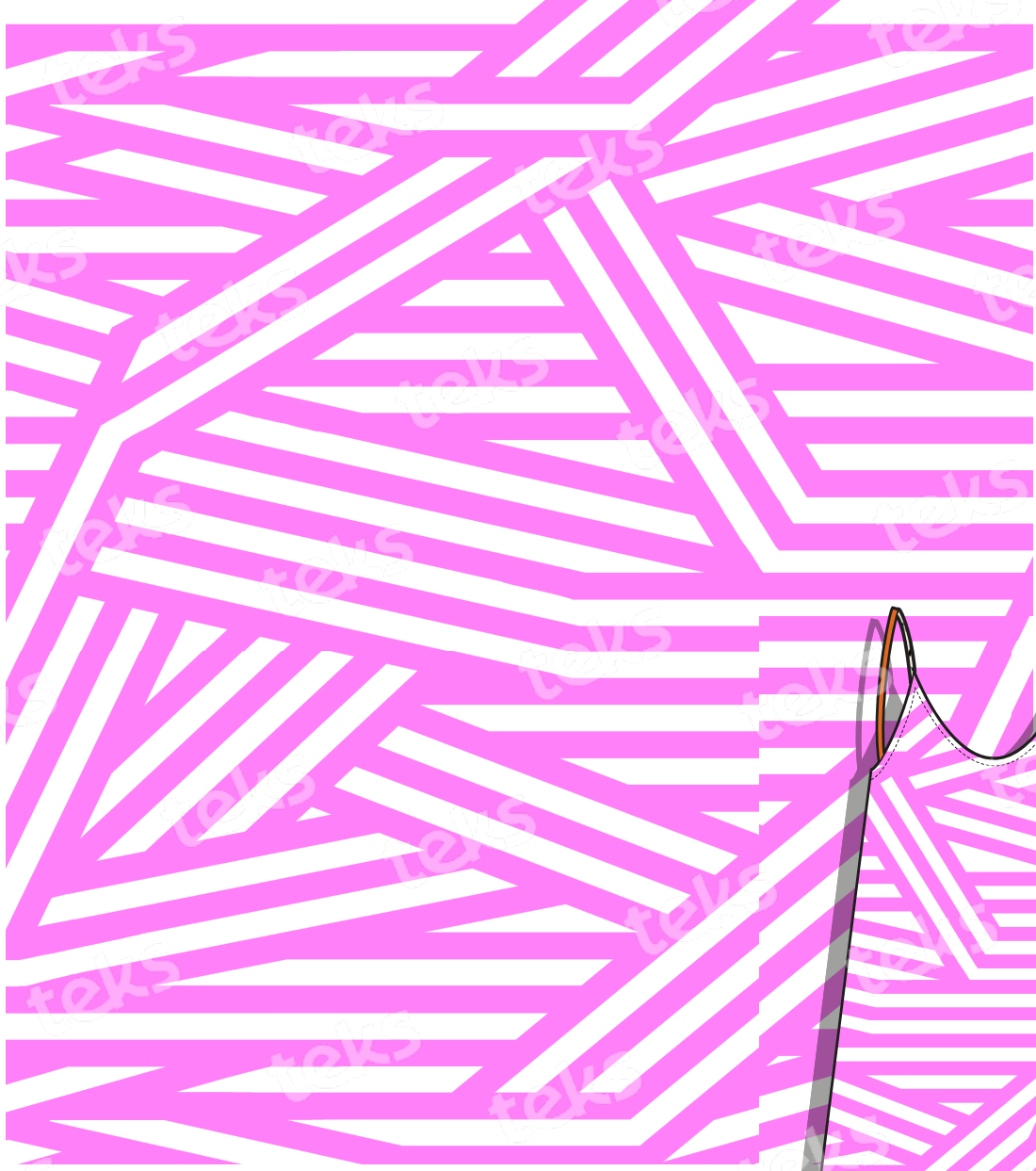
REFERENCIA: CHAL VENECIA  
BASE: CHALIS SUPREMO



# JUEGO DE RAYAS CRUZADAS



REFERENCIA: LINO MADERO  
BASE: LINO MILAN





# JUEGO DE RAYAS ACUARELADAS



REFERENCIA: CHAL VERONA  
BASE: CHALIS SUPREMO



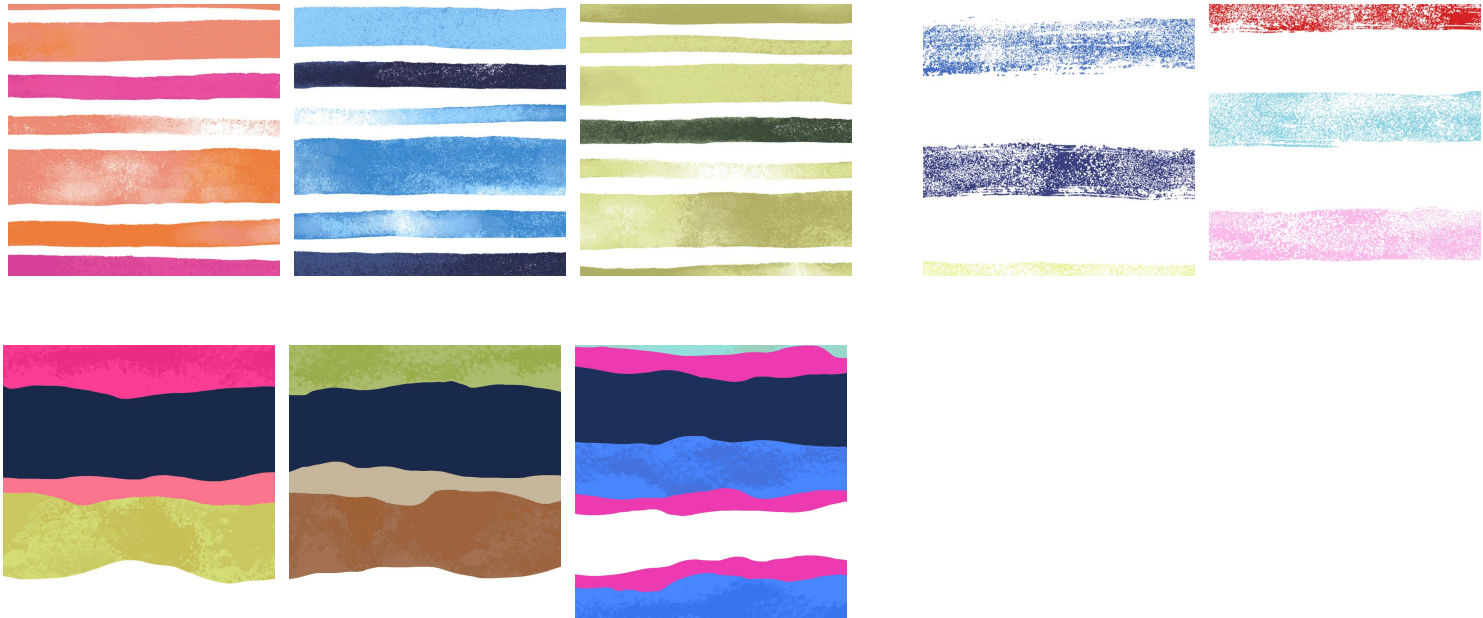
# JUEGO DE RAYAS CRUZADAS



REFERENCIA: CHAL JOKER  
BASE: CHALIS SUPREMO



JUEGO DE RAYAS ACUARELADAS



JUEGO DE RAYAS CRUZADAS

